

MONTHLY MEMBERSHIP PROGRESS REPORT

District 24 C

Results as of: 6/30/2024

GMT:

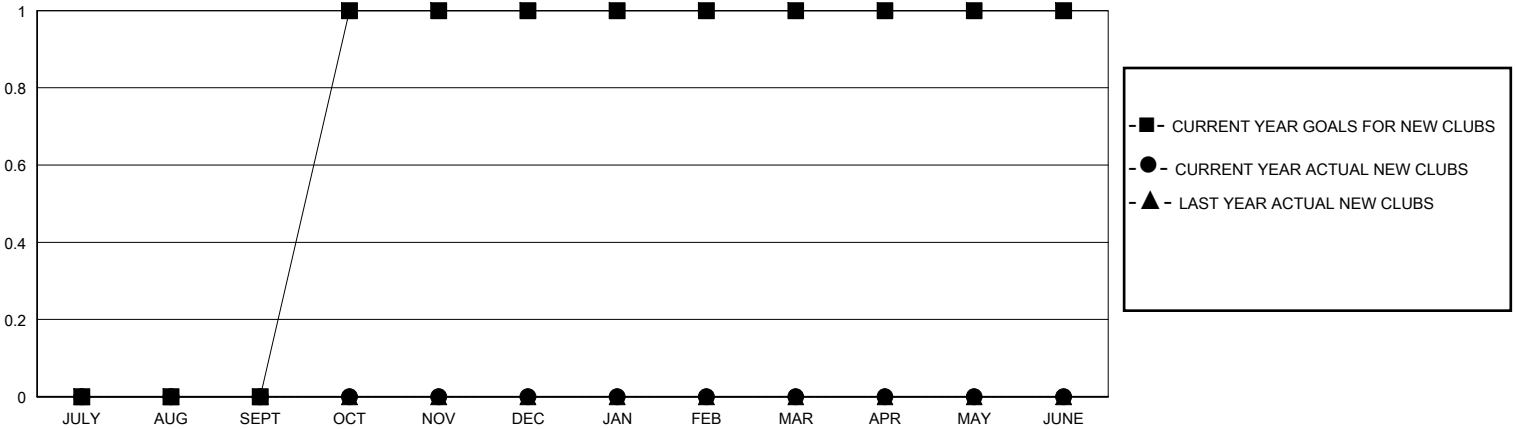
LOCATION VIRGINIA

GMT CA

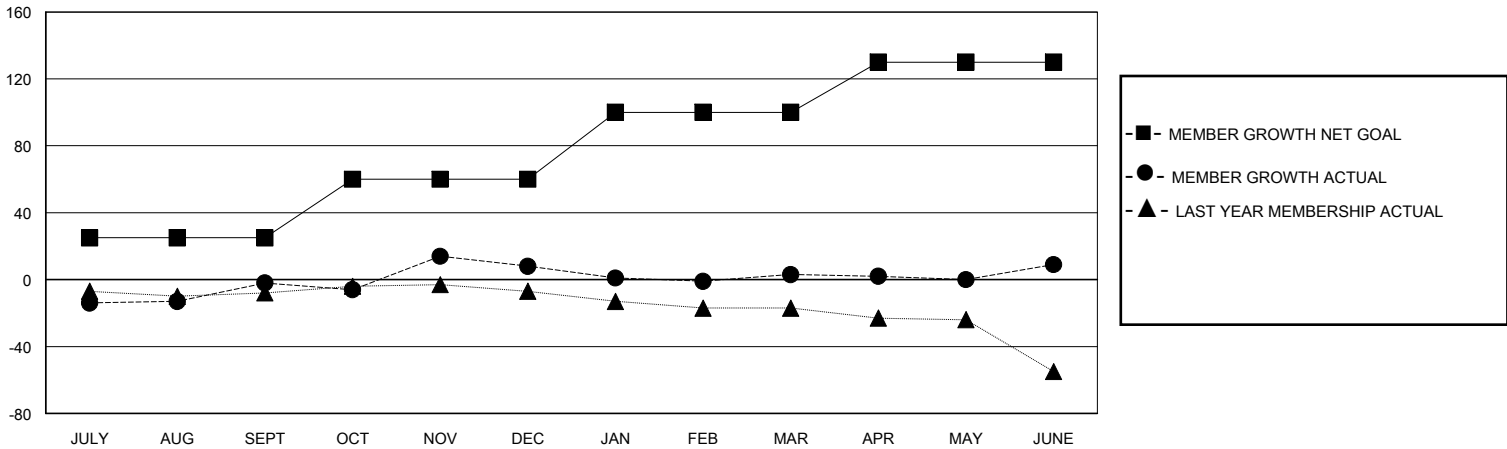
Clubs			
RESULTS FOR 2023-2024			
QUARTER	NEW CLUB GOAL	NEW CLUBS	DROPPED CLUBS
JULY/AUG/SEPT	0	0	0
OCT/NOV/DEC	1	0	0
JAN/FEB/MAR	0	0	0
APR/MAY/JUNE	0	0	0

Members			
RESULTS FOR 2023-2024			
QUARTER	MEMBER GROWTH NET GOAL	MEMBER GROWTH ACTUAL	DROPPED MEMBERS ACTUAL (including transfers)
JULY/AUG/SEPT	25	36	34
OCT/NOV/DEC	35	52	39
JAN/FEB/MAR	40	37	34
APR/MAY/JUNE	30	42	33

GOALS AND ACTUAL NEW CLUBS CUMULATIVE



GOALS AND ACTUAL MEMBERS CUMULATIVE



DROPPED CLUBS: 0	34 CLUBS OF 51 ADDED 1 OR MORE NEW MEMBERS	GENDER DISTRIBUTION MALE 806 (63.77%) FEMALE 458 (36.23%)
DROPPED MEMBERS DECEASED 28 CLUB CANCELLED 0 OTHER 112 TOTAL 140	CLICK HERE FOR CUMULATIVE MEMBERSHIP DATA	TOTAL FAMILY UNIT MEMBERS 211 FAMILY MEMBERS PAYING HALF DUES 106